

AUTOMATED OPTICAL INSPECTION

CBD inspection criteria meet or exceed IPC-A-610 "Acceptability of Electronic Assemblies" as well as ANSI/J-STD-001 "Requirements for Soldered Electrical and Electronic Assemblies". This is possible in part through the use of (AOI) "Automated Optical Inspection". The OMRON VT-WIN® has image resolution from 13 to 50 µm. This allows high-speed inspection of leaded components from 0.3mm pitch and 0402 chips. These inspection capabilities also apply to lead-free applications.

INSPECTION CATEGORIES:

SOLDER

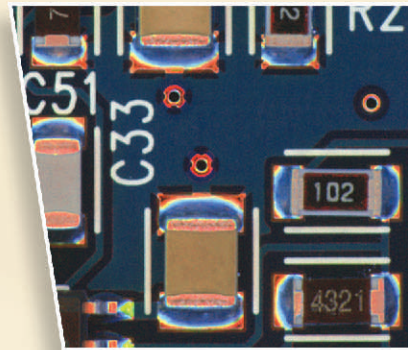
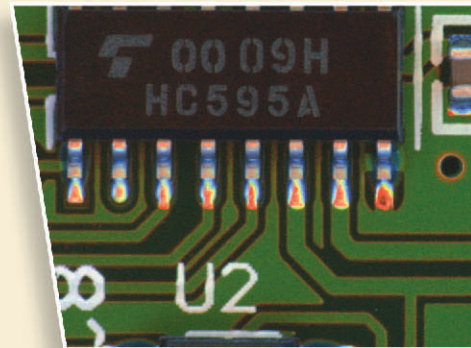
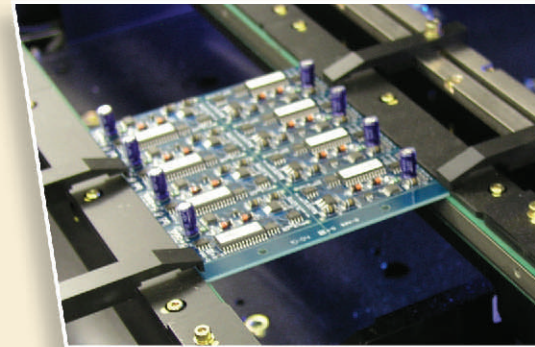
- Bridging
- Wettability
- Presence/Absence
- Excessive Solder
- Blow Holes
- Solder Balls

COMPONENT

- Presence/Absence
- Shift/Skew
- Lifting
- Un-Inserted
- Upside-Down
- Polarity Marking
- Pin One Marking
- Lead Bends

The full spectrum, angled color-viewing system, ensures accurate results from the most challenging board layouts.

The CCD camera captures these colors as they reflect off the board's surface, producing a two-dimensional image that conveys three-dimensional information to image processing.



For further information or an on-site inspection and demonstration, call, fax, or e-mail anytime.

CBD inc.

1185 Jansen Farm Ct. • Elgin, Illinois 60123
Phone 847-741-2233 • Fax: 847-741-2290

Web: www.cbdinc.net

E-mail: sales@cbdinc.net

